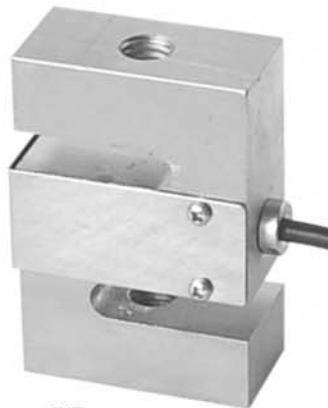


### FEATURES:

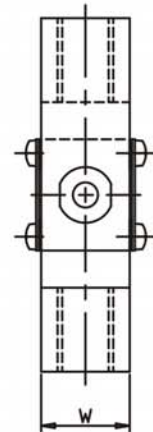
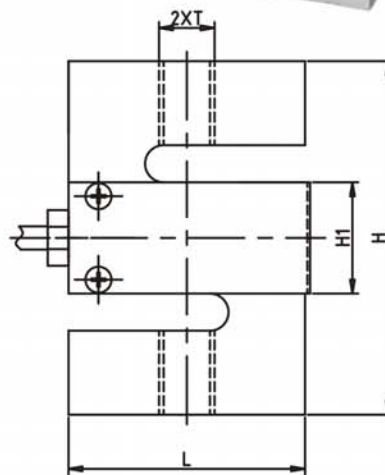
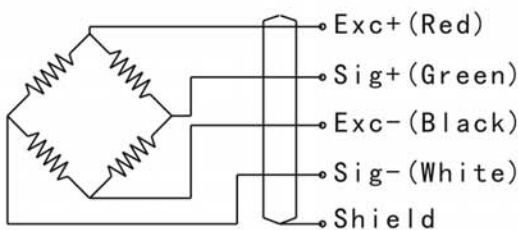
- Capacities: 50kg to 5t
- suitable for both tension and compression applications
- High accuracy
- OIML C3 approval
- Protection to IP65(50kg-1t), IP68(1.2t-5t)
- Alloy steel or Stainless steel



### APPLICATION:

- belt scale
- Crane scale
- Blending system
- Testing machine

### Wiring Diagram



Rated Capacity:	L	H	H1	W	T
50kg~750kg	51	76.2	24	19.1	M12
1t	51	76.2	24	25.4	M12
1.2t~5t	76.2	100.4	38	38.1	M20X1.5

### SPECIFICATIONS

Rated capacity:	50kg to 5ton	Operating temperature range:	-30 to +70°C
Rated output:	2.0 ± 0.003mv/v ( DEE ) ; 3.0 ± 0.003mv/v ( DEF )	Maximum safe overload;	150% OF R.C
Combined error:	± 0.03% F.S	Ultimate safe overload;	180% OF R.C
Non-repeatability:	± 0.02% F.S	Recommended Excitation;	10 to 12V DC
Non-linearity:	± 0.02% F.S	Maximum Excitation;	15V DC
Hysteresis error:	± 0.02% F.S	Environment protection:	IP65(50kg~1t); IP68(1.2t~5t)
Zero balance:	± 1% F.S	Input impedance:	400 ± 20 Ω
Creep error(30minutes):	± 0.02% F.S	Output impedance:	352 ± 3 Ω
Temperature effect on zero:	± 0.02% F.S	Insulation resistance at 50V DC:	≥ 5000MΩ
Temperature effect on output:	± 0.02% F.S	Material:	nickel-plated alloy steel
Compensated temperature range:	-10 to +40°C	Cable length:	3meter, diameter 5mm