

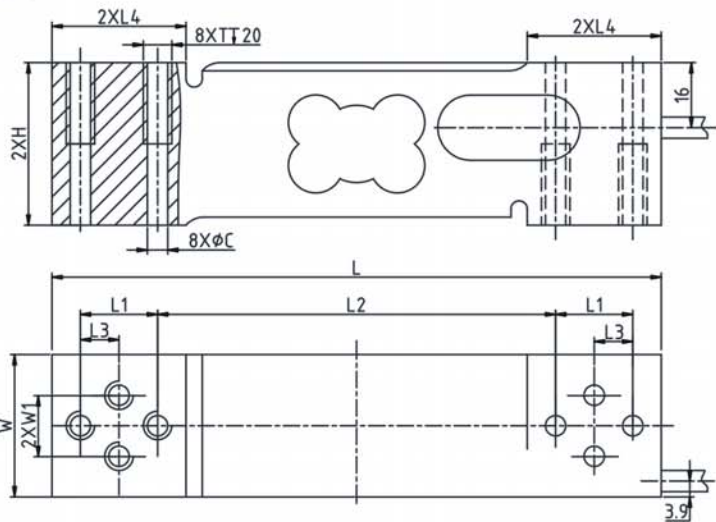
FEATURES:

- Capacity 50kg to 300kg
- Compact structure, easy installation
- OIML C3 Approval

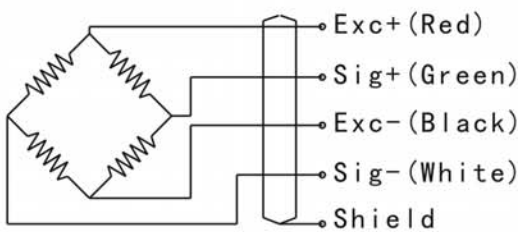


APPLICATION:

- Platform scales



Wiring Diagram



Rated Capacity:	L	L1	L2	L3	L4	H	W	W1	T	C
50,100,150, 200,250,300kg	150	19	98	9.5	33	40	35	15	5	M6

SPECIFICATIONS

Rated capacity:	50kg to 300kg	Operating temperature range:	-10°C~+50°C
Sensitivity:	2.0 ± 0.2mv/v	Maximum safe overload:	150%Emax
Accuracy class:	OIML C3	Ultimate overload:	300%Emax
Repeatability:	± 0.01% F.S	Recommended Excitation:	10V DC
Non-linearity:	± 0.0166% F.S	Maximum Excitation:	15V DC
Hysteresis error:	± 0.0166% F.S	Protection Class:	IP65
Zero balance:	± 3%Emax	Input impedance:	404 ± 15 Ω
Creep error(30minutes):	± 0.0166% F.S	Output impedance:	350 ± 3 Ω
TC Zero:	± 0.0175%F.S/10°C	Insulation resistance at 50V DC:	≥ 2000MΩ
TC Span:	+20°C~+40°C, ± 0.0175%F.S/10°C	Material:	Aluminium
	-10°C~+20°C, ± 0.0117%F.S/10°C	Cable length:	1.8meter, diameter φ5mm
Compensated temperature range:	-10°C~+40°C	Max.platform size:	400 × 500mm
		Recommended Installation torque:	10N.m