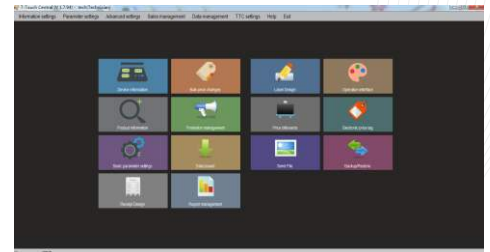


## PE7 Series Label Printing Scales

### General Specifications

- |                  |  |
|------------------|--|
| • Display        | 7" colour touch screen operator display(800x480)<br>7" colour customer display (800x480) |
| • Capacities     | 6kg~30kg   |
| • Keyboard       | 39keys (Membrane keyboard)   |
| • Pan size       | 280 x385mm   |
| • Housing        | ABS plastic  |
| • Max. Divisions | 2 x 3,000e   |
| • ADC update     | ≤1/10 second   |
| • Operate Temp   | 0°C~+40°C  |
| • Power          | In put : AC 100~240V,50/60HZ<br>Out put : DC (24V/5000mA)                                |



T-Touch Central

- Standard TOS II embedded Operating System(1.2GHz)(Linux)
- CPU:A9 dual core;
- Memory:RAM:1G; Flash:1G
- Detachable pole can be adjusted to different environment
- Stainless steel pan
- PLU product and sale reports management
- 24 direct PLU key on the keypad
- Customer display allows for playing image advertisements
- Multi-language selection
- Multi-weighing units selection
- TTC Back Office Software Management allows to make product update, create customized print format, UI(operator interface) ,report management, data import&export,etc.
- Cassette type thermal printer, support label and receipt  
Max label width:60mm; Max print width:58mm; Max print length:180mm; printing speed:100mm/s  
Printer head life:150km; print resolution: 8dot/mm
- 2xUSB2.0; 2xRS232;1xRJ45;1xRJ11
- Optional WIFI application

## PE7 Series Label Printing Scales

Model Name	Capacity	Readability	Division	Approx. weight	Approval
PE7-15-15K-MR	6kg/15kg	2g/5g	2x3,000e	11kg	CE;NTEP
PE7-15-30K-MR	15kg/30kg	5g/10g	2x3,000e	11kg	CE;NTEP

### Options



### Dimensions(mm)

